



TA551A/16-11 ST PNEUMATIC STAPLER



OPERATING AND MAINTENANCE MANUAL



WARNING

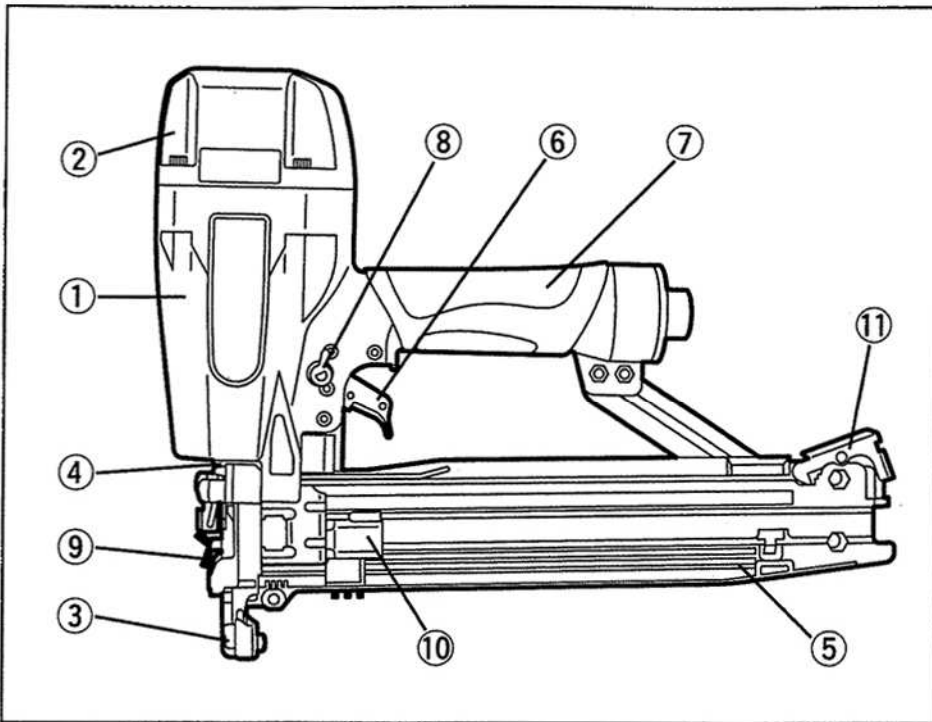
BEFORE USING THIS TOOL, STUDY THIS MANUAL TO ENSURE SAFETY WARNING AND INSTRUCTIONS.

KEEP THESE INSTRUCTIONS WITH THE TOOL FOR FUTURE REFERENCE.

July 2012

SPECIFICATIONS AND TECHNICAL DATA

1. NAME OF PARTS



- ① Frame
- ② Cylinder Cap
- ③ Contact Arm
- ④ Nose
- ⑤ Magazine
- ⑥ Trigger
- ⑦ Grip
- ⑧ Trigger Lock Dial
- ⑨ Staple Removal Lever
- ⑩ Pusher
- ⑪ Click Lever

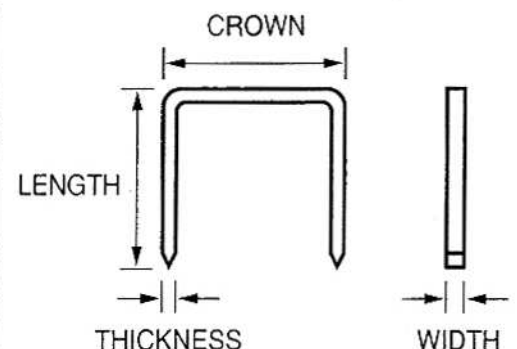
2. TOOL SPECIFICATIONS

PRODUCT NO.	TA551A/16-11 ST
HEIGHT	288.5 mm (11-3/8")
WIDTH	84 mm (3-1/4")
LENGTH	356 mm (14")
WEIGHT	2.2 kg (4.9 lbs.)
RECOMMENDED OPERATING PRESSURE	5 to 7 bar (70 to 100 p.s.i.)
LOADING CAPACITY	157 Staples
AIR CONSUMPTION	1.1 ℓ (0.039 ft ³) at 7 bar (100 p.s.i.) operating pressure

* The machine has been compactly designed in order to improve operating weight balance.

3. FASTENER SPECIFICATIONS

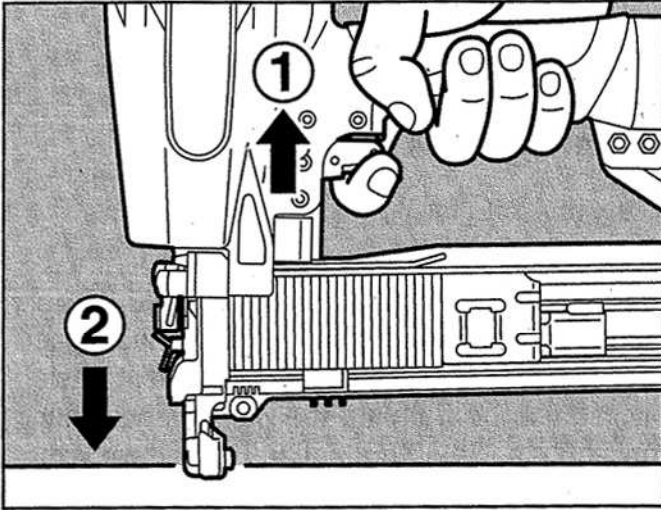
PRODUCT NO.	TA551A/16-11 ST
CROWN	11 mm (7/16")
LENGTH	25 to 51 mm (1" to 2")
WIDTH	1.57 mm (0.062")
THICKNESS	1.40 mm (0.055")
GAUGE	16



DRIVING FASTENERS

CONTACT FIRE OPERATION (CONTACT TRIP)

For contact fire operation, hold the trigger and depress the contact arm against the work surface.

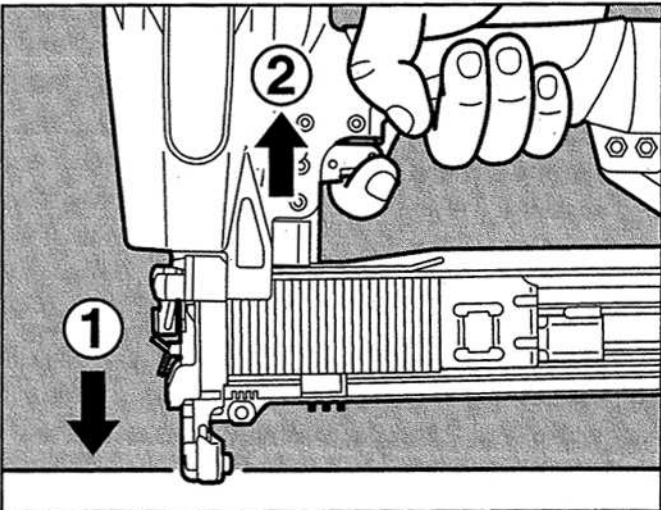


PROCEDURE

- ① Hold the trigger.
- ② Depress the contact arm.

SINGLE FIRE OPERATION - SEQUENTIAL TRIP

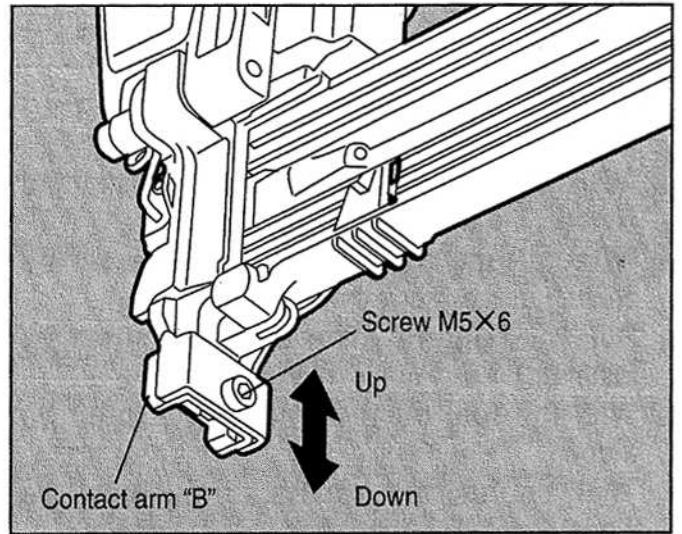
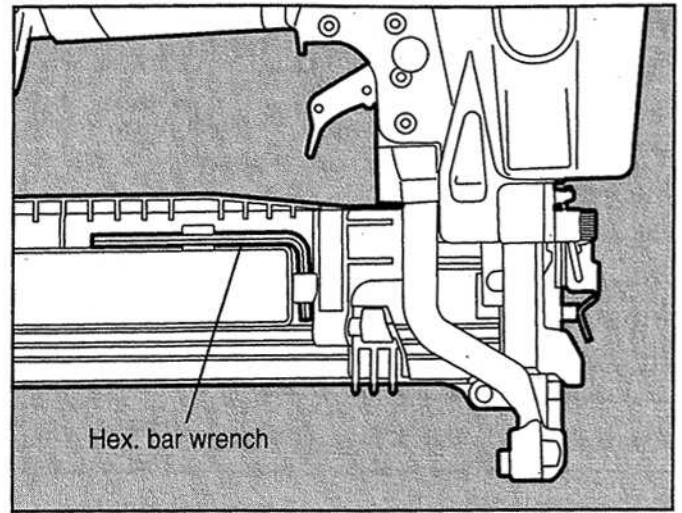
For single fire operation, depress the contact arm against the work surface and pull the trigger. Tool can not fire a second fastener until the trigger is released and tool can cycle.



PROCEDURE

- ① Depress the contact arm.
- ② Pull the trigger.

DRIVING DEPTH ADJUSTMENT



WARNING

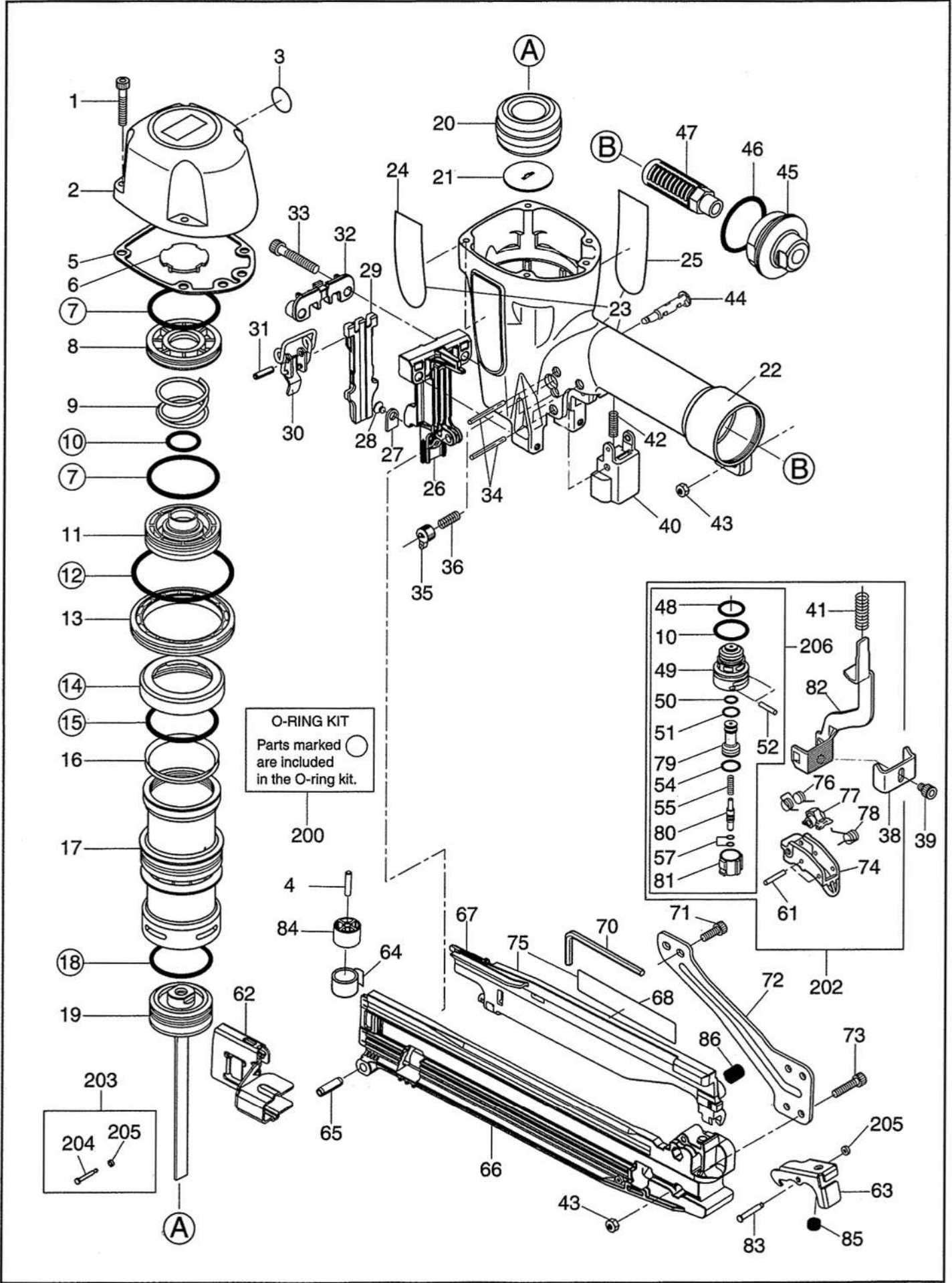
ALWAYS disconnect air supply before making adjustment.


The driving depth adjustment is made by adjusting the contact arm "B".

- ① With air pressure set, drive a few staples into a representative material sample to determine if adjustment is necessary.
- ② If adjustment is required, disconnect air supply.
- ③ Take off hex. bar wrench set in the magazine. The screw M5X6 is loosened to allow the contact arm "B" to be moved up or down. If the tool is "OVER DRIVING" (the staples is driven below the work surface), the contact arm "B" should be moved down slightly. If staples "STICKING-OUT" (the staples is not flush with the work surface), the contact arm "B" should be moved up slightly.

TA551A/16-11 ST

**EXPLODED
VIEW AND SPARE
PARTS LIST**



O-RING KIT
Parts marked  are included in the O-ring kit.

203
204 205

48
10
49
50
51
79
54
55
80
57
81
41
206
82
76
77
78
38
39
61
74
72
202

TA551A/16-11 ST

ITEM NO.	PART NO.	MATERIAL	ENGLISH
1	BB40470	Steel	SCREW M5x32
2	TA18832	Aluminum	CYLINDER CAP
3	CN35720	Polyethylene terephthalate	LABEL B (CE)
4	FF31535	Stainless steel	PARALLEL PIN 1535
5	TA16997	Aluminum, Rubber	CYLINDER CAP SEAL
6	CN33838	Rubber	EXHAUST SEAL
7	HH11170	Rubber	O-RING 1AP48
8	CN37216	Polyacetal	HEAD VALVE GUIDE
9	KK23934	Stainless steel	COMPRESSION SPRING 3934
10	HH11138	Rubber	O-RING 1AP20
11	CN37217	Polyacetal	HEAD VALVE PISTON
12	HH12108	Rubber	O-RING 1AG60
13	CN35060	Polyacetal	CYLINDER RING
14	CN37824	Urethane	CYLINDER SEAL
15	HH19165	Rubber	O-RING 1A2.6x46.5
16	CN35131	Rubber	CHECK VALVE
17	TA18836	Aluminum	CYLINDER
18	HH11807	Rubber	O-RING 1AP38
19	TA70278	Magnesium, Steel	MAIN PISTON UNIT
20	TA17016	Rubber	BUMPER
21	TA17017	Steel	NOZZLE
22	TA18831	Aluminum	FRAME
23	TA81241		FRAME UNIT
24	TA18834	Polyethylene terephthalate	LABEL "A"
25	TA18835	Polyethylene terephthalate	LABEL "B"
26	TA18688	Steel	NOSE
27	TA18523	Steel	WEAR CHIP
28	AA22207	Steel	SCREW M4x5
29	TA18509	Steel	DRIVER GUIDE "B"
30	TA70256	Stainless steel, Steel	LATCH UNIT
31	FF21275	Steel	ROLL PIN 4x16
32	TA18508	Steel	DRIVER GUIDE "A"
33	BB40465	Steel	SCREW M6x45
34	FF21611	Steel	ROLL PIN 3x32
35	CN35074	Nylon	TRIGGER LOCK DIAL
36	KK23507	Stainless steel	COMPRESSION SPRING 3507
37	TA17007	Steel	CONTACT ARM A
38	TA17008	Steel	CONTACT ARM B
39	BB40467	Steel	SCREW M5x6
40	TA17001	Nylon	CONTACT ARM GUIDE
41	KK23807	Stainless steel	COMPRESSION SPRING 3807
42	KK23282	Stainless steel	COMPRESSION SPRING 3282
43	GC49409	Steel	NUT M5 "T"
44	CN35075	Nylon	TRIGGER LOCK LEVER
45	CN37865	Aluminum	END CAP
46	HH12118	Rubber	O-RING 1AG35
47	TA17024	Nylon	FILTER "A"
48	HH11125	Rubber	O-RING 1AP12
49	CN31323	Polyacetal	TRIGGER VALVE HOUSING
50	HH11119	Rubber	O-RING 1AP6

ITEM NO.	PART NO.	MATERIAL	ENGLISH
51	HH11209	Rubber	O-RING 1BP7
52	FF30161	Stainless steel	STRAIGHT PIN 161
53	CN31589	Polyacetal	PILOT VALVE
54	HH11113	Rubber	O-RING 1AP9
55	KK24123	Stainless steel	COMPRESSION SPRING 4123
56	CN35779	Steel	TRIGGER VALVE STEM
57	HH11901	Rubber	O-RING 1B1.4x2.5
58	CN33009	Polyacetal	TRIGGER VALVE CAP
59	CN35115	Steel	CONTACT LEVER
60	CN35714	Polyacetal	TRIGGER
61	FF22402	Stainless steel	ROLL PIN 3x16
62	TA18511	Steel	PUSHER
63	TA18512	Steel	CLICK LEVER
64	KK44023	Stainless steel	PUSHER SPRING 4023
65	FF21613	Stainless steel	ROLL PIN 6x20
66	TA18510	Nylon	MAGAZINE
67	TA17010	Nylon	MAGAZINE COVER
68	TA18833	Polyethylene terephthalate	WARNING LABEL(USA)
68	TA18841	Polyethylene terephthalate	WARNING LABEL(CE)
70	TT15401	Steel	HEX.BAR WRENCH 4
71	BB40408	Steel	SCREW M5x14
72	TA17043	Steel	TAIL HANGER
73	BB40401	Steel	SCREW M5x22
74	CN35714	Polyacetal	TRIGGER
75	TA81180	Nylon, Polyethylene terephthalate	MAGAZINE COVER ASSY (USA)
75	TA81189	Nylon, Polyethylene terephthalate	MAGAZINE COVER ASSY (CE)
76	KK33247	Stainless steel	TORSION SPRING 3247
77	TA16138	Steel	S.T.LEVER
78	KK33144	Stainless steel	TORSION SPRING 3144
79	CN33627	Polyacetal	PILOT VALVE
80	CN33723	Steel	TRIGGER VALVE STEM
81	CN31346	Polyacetal	TRIGGER VALVE CAP
82	TA17023	Steel	CONTACT ARM A
83	FF41599	Steel	STEP PIN 1599
84	GN10424	Stainless steel	SPRING COLLAR
85	KK23998	Stainless steel	COMPRESSION SPRING 3287
86	KK29015	Stainless steel	COMPRESSION SPRING 9015
200	TA81012		O-RING KIT
201	TA81178	CT	TRIGGER VALVE KIT
202	TA81011		SEQUENTIAL TRIP KIT
203	TA81014		STEP PIN KIT
204	FF41842	Steel	STEP PIN 1842
205	EE39609	Urethane	RUBBER WASHER 1.8x6x2
206	CN80150		TRIGGER VALVE KIT (ST)